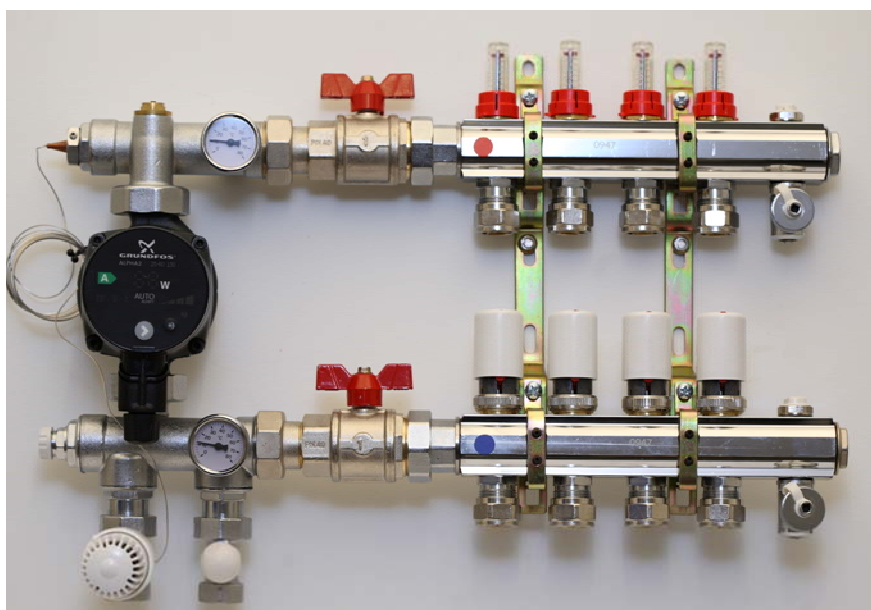
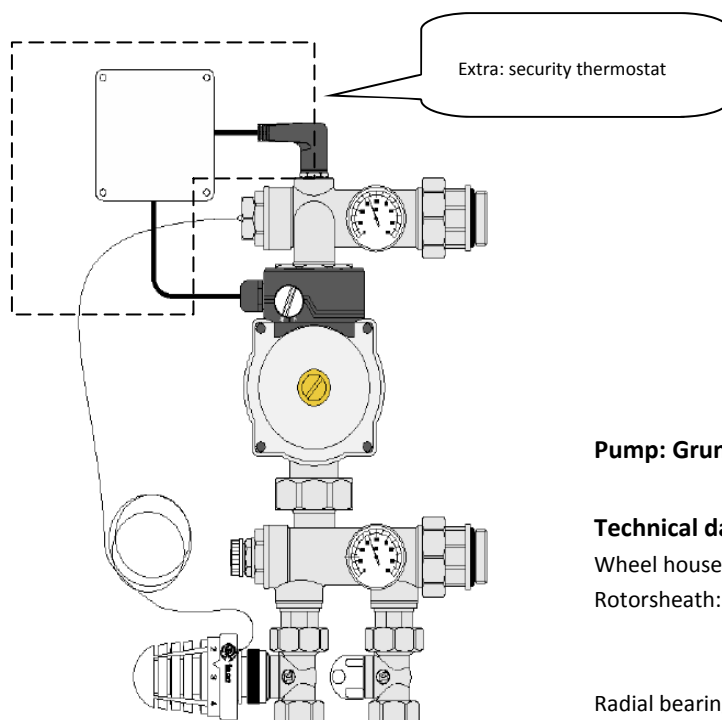


Floorheating systems

Valid from 01.12.2009



Fixed point regulation—datasheet



Pump: Grundfoss Alpha2

Technical data:

Wheel house:	Komposit, PC
Rotorsheath:	Stainless steel EN/DIN 1.4301 AISI/ASTM 304
Radial bearing:	Ceramics
Shaft:	Ceramics
Rotorjacket:	Stainless steel EN/DIN 1.4301 AISI/ASTM 304
Pressureplate :	Carbon
Pressureplate :	EDPM-rubber
Plate bearing:	Stainless steel EN/DIN 1.4301 AISI/ASTM 304
Runner:	Komposit PP, PES
Pumphouse:	Cast Iron, EN/DIN EN-JL 1020 AISI/ASTM A48-25 Rustfrit stål EN/DIN 1.4308 AISI/ASTM B
Pack:	EPDM-rubber

Technical features:

Materials:

Pump connections bodies:	Brass UNI EN 1982 CB735S
Valves bodies:	Brass UNI EN 12165 CW617N
Seal:	EDPM
Fluid:	Water, glicol solution
Max. percentage of glycol:	30%
Regulation field:	20-65°C
Max. Working pressure:	6 bar
Max. temperature in a primary circuit:	100°C
Thermometer scale:	0+80°C

Dimensions:

Primary connection:	3/4" F
Manifold connections:	1" with nut
Wheelbase of connection to a secondary:	206 mm
Pump wheelbase:	130 mm
Pump connection :	1 1/2" with nut

Thermostatic command

Thermostatic sensor kind:	liquid one
Nominal pressure:	PN 10
Control temperature range:	20-65°C
Hysteresis:	0,6 K

Grundfos Alpa 2 pump— datasheet



The newest technology from Grundfos in the new A-pump—Alpha 2.
- the eco-friendly pump.

Technical data:

Wheel house:	Komposit, PC
Rotorsheath:	Stainless steel EN/DIN 1.4301 AISI/ASTM 304
Radial bearing:	Ceramics
Shaft:	Ceramics
Rotorjacket:	Stainless steel EN/DIN 1.4301 AISI/ASTM 304
Pressureplate:	Carbon
Pressureplate :	EDPM-rubber
Plate bearing:	Stainless steel EN/DIN 1.4301 AISI/ASTM 304
Runner:	Komposit PP, PES
Pumphouse:	Cast Iron, EN/DIN EN-JL 1020 AISI/ASTM A48-25 Rustfrit stål EN/DIN 1.4308 AISI/ASTM B
Pack:	EPDM-rubber

There are 5 good reasons for choosing a A-pump:

- The A-pump adapts to the heatconsumption of the house
- The A-pump saves a family between Euro 30 and Euro 100 a year
- The investment is recovered in 2—4 years.
- The A-pump can reduce noise in the heating installation.
- The A-pump is a gift to the environment - since the electricity savings reduces the CO₂ emission.

Floorheating components



Art. nr.	Size	Description	Euro/pcs.
04 6541 002	2 way	Manifold with flowmeter	133,29
04 6541 003	3 way	Manifold with flowmeter	168,80
04 6541 004	4 way	Manifold with flowmeter	205,70
04 6541 005	5 way	Manifold with flowmeter	242,86
04 6541 006	6 way	Manifold with flowmeter	279,67
04 6541 007	7 way	Manifold with flowmeter	319,09
04 6541 008	8 way	Manifold with flowmeter	355,44
04 6541 009	9 way	Manifold with flowmeter	392,72
04 6541 010	10 way	Manifold with flowmeter	429,56
04 6541 011	11 way	Manifold with flowmeter	466,31
04 6541 012	12 way	Manifold with flowmeter	505,47



Art. nr.	Size	Description	Euro/pcs.
04 6541 000		Bypass	37,92



Art. nr.	Size	Description	Euro/pcs.
04 6539 312	12x2,0	Euroconus 3/4" - 985 P	1,83
04 6539 315	15x2,5	Euroconus 3/4" - 985 P	1,98
04 6539 316	16x2,0	Euroconus 3/4" - 985 P	2,03
04 6539 317	17x2,0	Euroconus 3/4" - 985 P	2,07
04 6539 318	18x2,5	Euroconus 3/4" - 985 P	2,10
04 6539 320	20x2,0	Euroconus 3/4" - 985 P	2,12
04 6539 416	16x2,0	Euroconus 3/4" - 985 M	2,48
04 6539 418	18x2,0	Euroconus 3/4" - 985 M	2,55
04 6539 420	20x2,0	Euroconus 3/4" - 985 M	2,95



Floorheating components



Art. nr.	Description	Euro/pcs.
04 0960 121	Master box 2 canal with pump relay – wireless	121,33
04 0960 126	Master box 8 canal with pump relay - wireless	182,76



Art. nr.	Description	Euro/pcs.
46 0960 135	Active receiver - wireless	100,00



Art. nr.	Description	Euro/pcs.
46 0962 232	Roomthermostat - wireless	61,54



Art. nr.	Description	Euro/pcs.
46 3596 065	Electrical drive - 230V	28,92
46 0957 010	Electrical drive – 24V	28,46



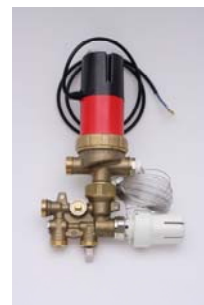
Art. nr.	Description	Euro/pcs.
04 6538 310	Fixes point regulation (Shunt + Alpha2 pump – assembled)	650,49



Floorheating components



Art. nr.	Description	Euro/pcs.
04 6538 350	Minishunt with thermostat regulation	396,65
04 6538 370	Duplex connector for 2 way	60,40



Art. nr.	Description	Euro/pcs.
04 6538 360	Minishunt with thermo engine with temperature regulated pump for wireless controle	467,11
04 6538 370	Duplex connector for 2 way	60,40
04 0960 120	Masterbox 1 canal/antenna 230 V	103,63



Art. nr.	Description	Euro/pcs.
04 6969 090	90 degree assembly for shuntt	23,32



Art. nr.	Size	Description	Euro/pcs.
41 8072 008	1"	Ballvalve F/M - T-grib - w/union	15,74
41 8073 008	1"	Ballvalve F/M - T-grib - w/union - 90 degree.	20,32



Pricelist for complete floorheating systems

(The prices below are all gross prices)



Floorheating systems			Complete floorheating systems											
Components			04.6541102	04.6541103	04.6541104	04.6541105	04.6541106	04.6541107	04.6541108	04.6541109	04.6541110	04.6541111	04.6541112	
Art. Nr.	Description	Price/pcs	2 way	3 way	4 way	5 way	6 way	7 way	8 way	9 way	10 way	11 way	12 way	
04.6538.310	Fixed point reg.	650,49	650,49	650,49	650,49	650,49	650,49	650,49	650,49	650,49	650,49	650,49	650,49	
46.0960.185	Active receiver	100,00	100,00	100,00	100,00	100,00	100,00	100,00	100,00	100,00	100,00	100,00	100,00	
46.3586.065	Electrical drive	28,91	57,83	86,74	144,56	173,48	173,48	202,39	231,30	260,21	289,13	318,04	346,95	
46.0962.232	Room thermostat	61,54	123,07	184,61	307,68	369,22	369,22	430,76	492,30	553,83	615,37	676,91	738,44	
04.0960.121	Masterbox - 2 canal	121,32	121,32							121,32	121,32			
04.0960.126	Masterbox - 8 canal	182,76		182,76	182,76	182,76	182,76	182,76	182,76	182,76	182,76	365,52	365,52	
04.6541002	2 way manifold	133,29	133,29											
04.6541003	3 way manifold	168,80		168,80										
04.6541004	4 way manifold	205,70			205,70									
04.6541005	5 way manifold	242,86			242,86									
04.6541006	6 way manifold	279,67				279,67								
04.6541007	7 way manifold	319,09						319,09						
04.6541008	8 way manifold	355,44							355,44					
04.6541009	9 way manifold	392,72								392,72				
04.6541010	10 way manifold	429,56									429,56			
04.6541011	11 way manifold	466,31										466,31		
04.6541012	12 way manifold	505,47											505,47	
04.6539.320	20x2,0 mm Euroconus	2,50	10,01	15,02	20,03	30,04	30,04	35,05	40,05	45,06	50,07	55,07	60,08	
Gross price complete system - EURO			1.196,01	1.388,42	1.520,77	1.653,39	1.785,66	1.920,53	2.052,34	2.306,40	2.438,69	2.632,34	2.766,96	